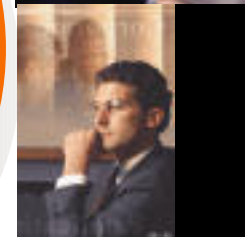




## ***Be Here Now:***

- High traffic flow
- New High-Performance Road System makes it easy for customers and patients to visit, park, and exit.
- It's good for business.



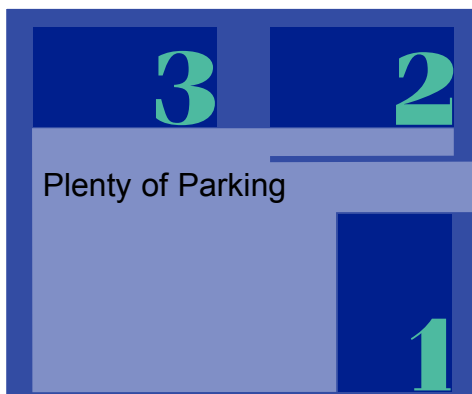
<http://www.majesticplaza.com>



MAJESTIC PLAZA

# Majestic Plaza

**Special Rate  
with  
Immediate  
Occupancy.**



***Northwest Indianapolis:***

***One minute to I-465 and anywhere...***

***Northwest Corporate Connection***

**FACT:  
Unrivaled!**  
*The easiest entry into and egress from the dynamic Greater Indianapolis Marketplace.*

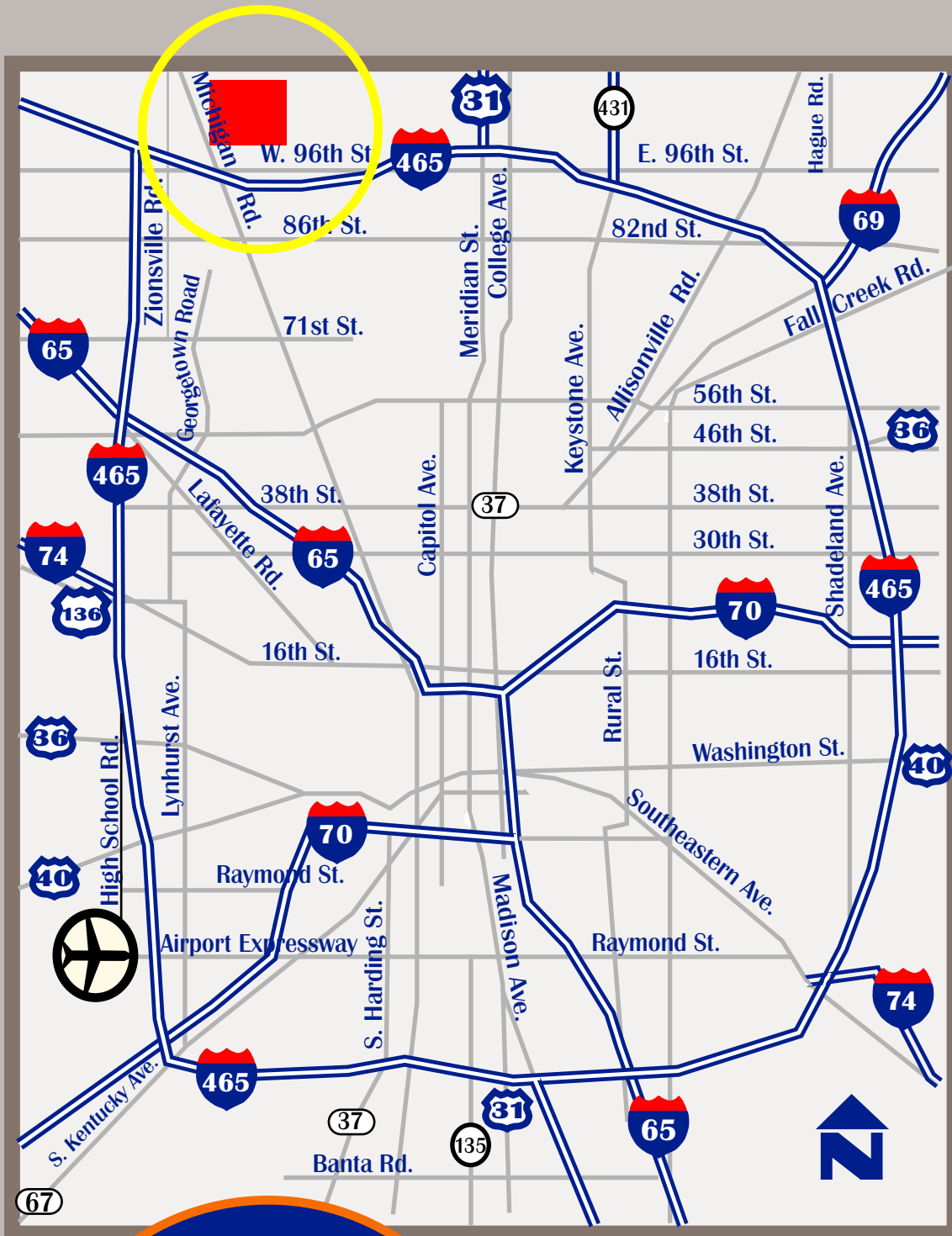
< So close, so quiet, so Northwest Convenient, and so very rich, comfortable and Corporate.

< Offering a Full Amenity Package.

< You'll love the extra touches of Corporate Luxury throughout Majestic Plaza.

PLUS...  
< You'll love our Special "Limited Offer" Rate Reduction Period.

**Act Now For  
Prime Office Space.**



## Specifications:

- High Profile/New Construction
- Space Available from 1,500 to 66,000 rsf
- Surface Parking Spaces 4:1,1,000)
- Well-appointed Interior Finishes
- Architecturally Appealing Exterior
- 3-story Structure in a Campus-Like Environment
- Three same sized structures (each 22,000 rsf) and a fourth building available (12,000 rsf)
- Special Introductory Rates Available For a limited time period
- On-Site Storage, Conference Facility and Workout Facility
- 12% Rentable Factor
- Tours by Appointment Only

**Introductory Lease Program.**

**Call now for details.**

**Act Now:  
9650 Building  
Now Leasing!**

Majestic Plaza  
9640 North Augusta Drive, Building One  
Carmel, Indiana 46032



<http://www.majesticplaza.com>

CALL NOW. 317.876.1555  
LEASING OFFICE IS LOCATED ON  
2RD FLOOR, SUITE #521.

